



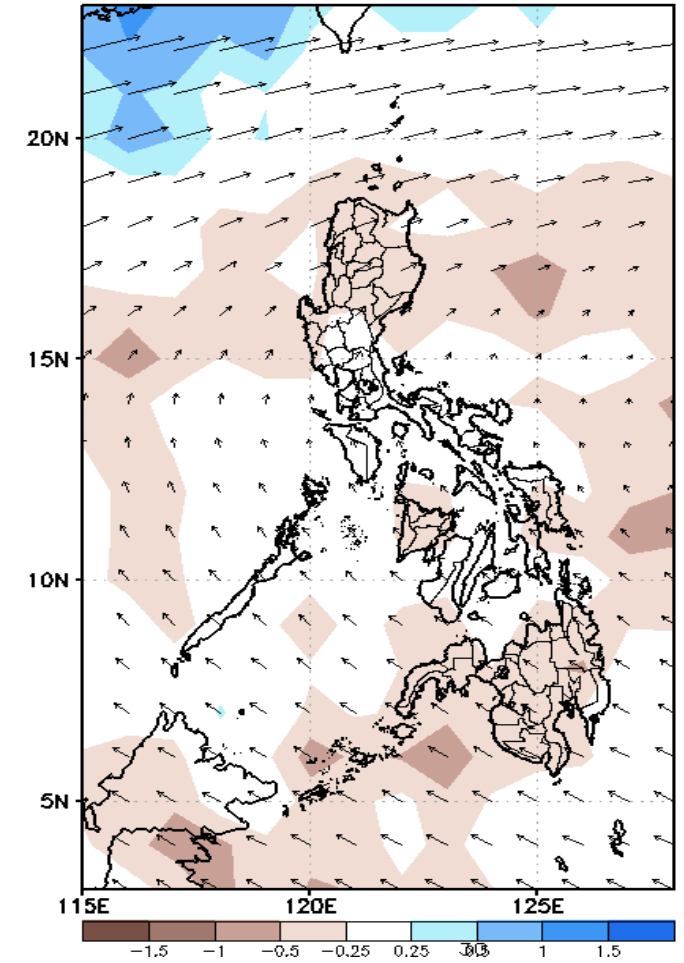
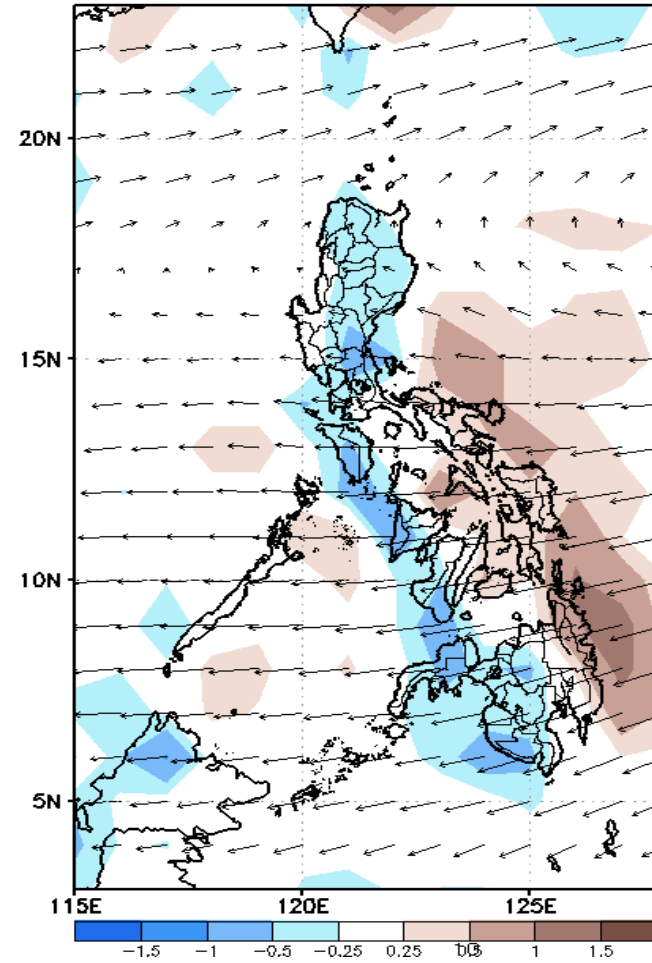
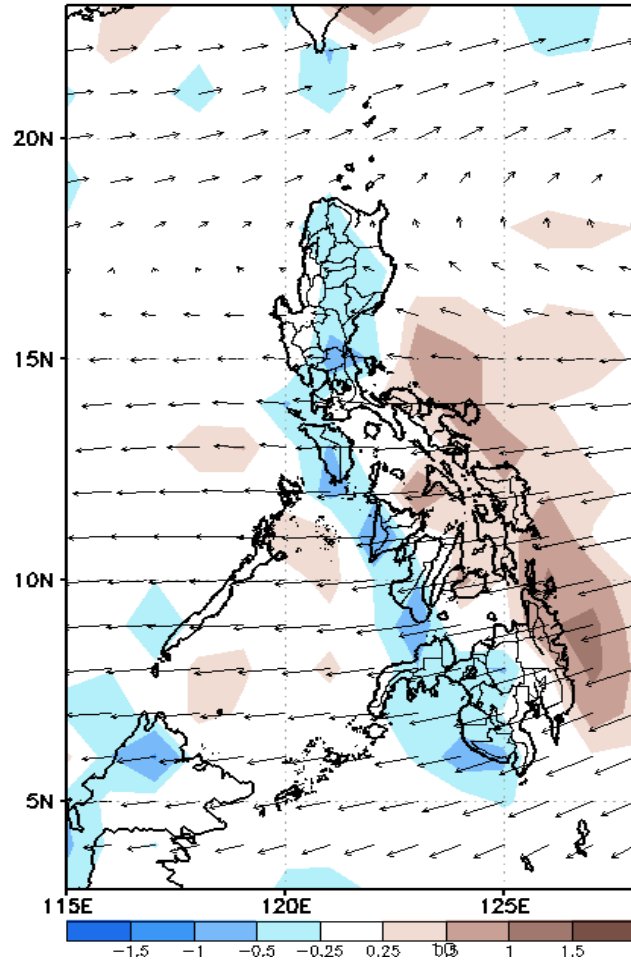
Week 1 & Week 2 Forecast for the Philippines using GEFS Model



GEFS Week-1 Forecasts: Divergence & Wind Anomaly

Week 1: February 1-7, 2021

GEFS Week-1 850-hPa Divergence and Wind Anom
Valid: 20210201 - 20210207

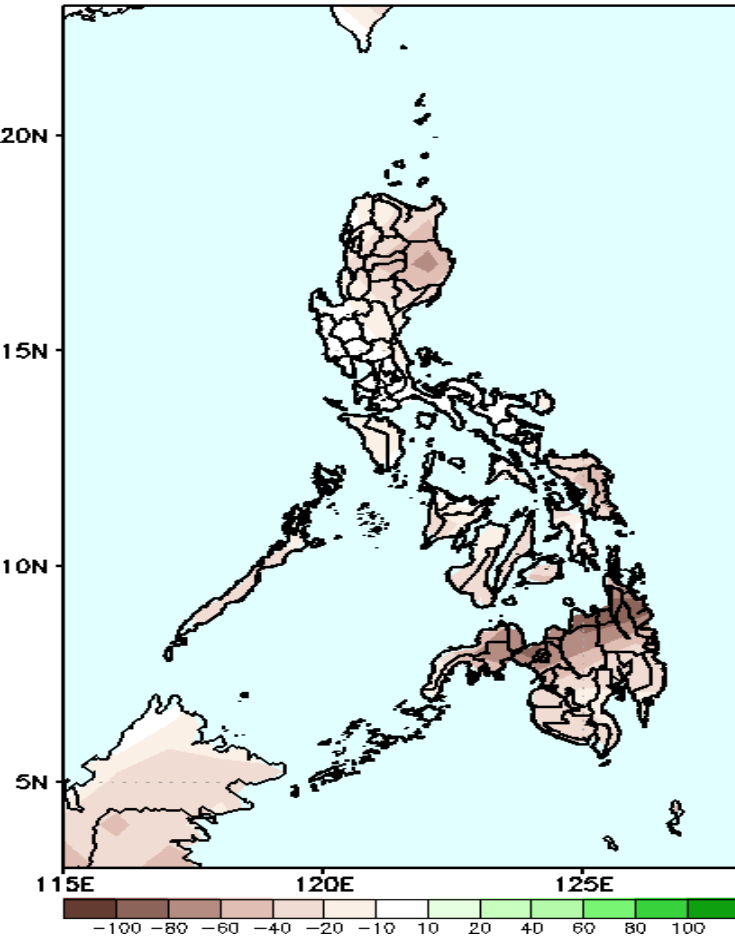


Upper and low level Divergence suggest likelihood of precipitation in most parts of the country except La Union, Pangasinan and most parts of Southern Luzon. Northeast Monsoon affecting most parts of the country during the forecast period.

Precipitation Anomaly and Exceedance Probability > 25/50 mm

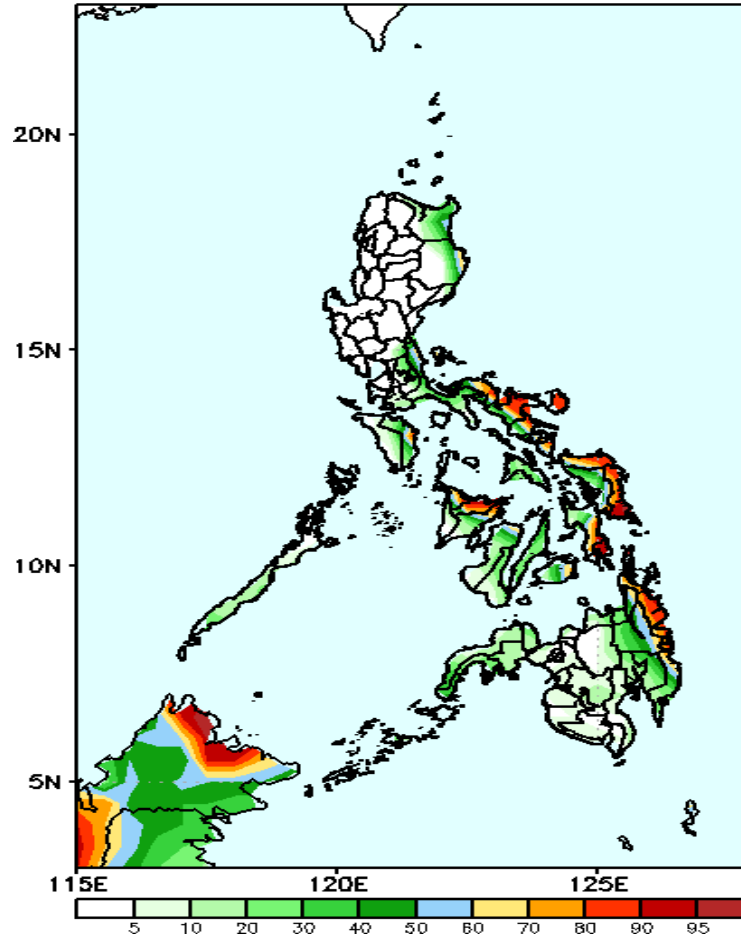
Week 1: February 1-7, 2021

GEFS Week-1 Precip Anomaly
Valid: 20210201 - 20210207



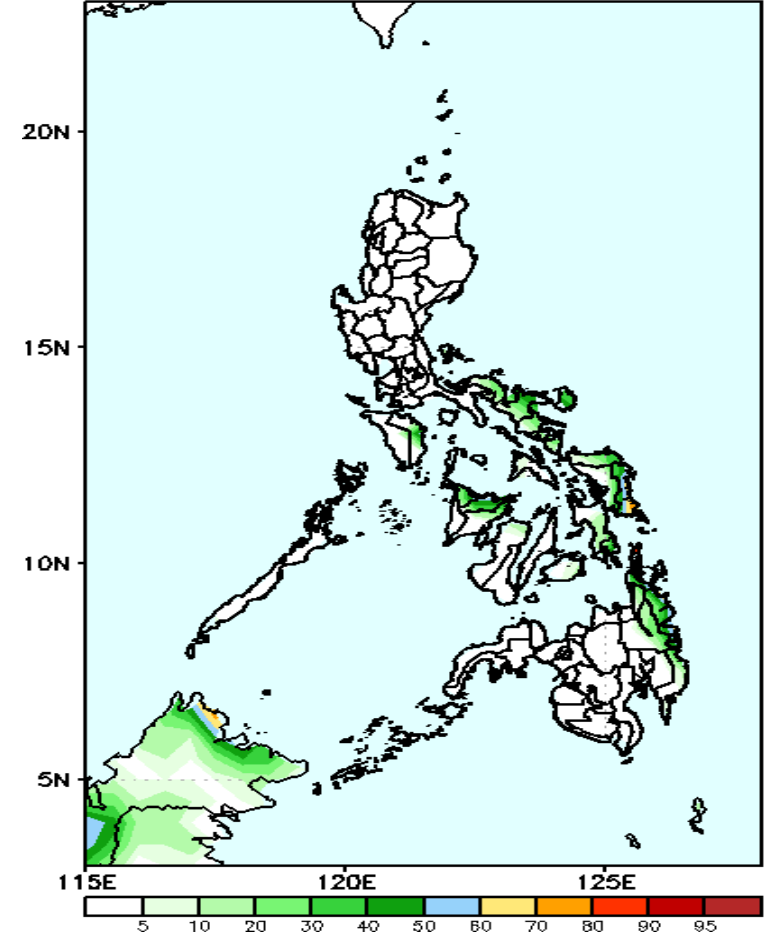
Rainfall deficit of 60-100mm is expected in most parts of the country especially in Mindanao.

GEFS Week-1 Exceedance Prob. > 25mm
Valid: 20210201 - 20210207



High probability of rainfall to exceed 25mm in most parts of Bicol region, Northern and Eastern Samar, Aklan, Capiz, Southern Leyte and Surigao provinces while less likely for the rest of the country during the forecast period.

GEFS Week-1 Exceedance Prob. > 50mm
Valid: 20210201 - 20210207

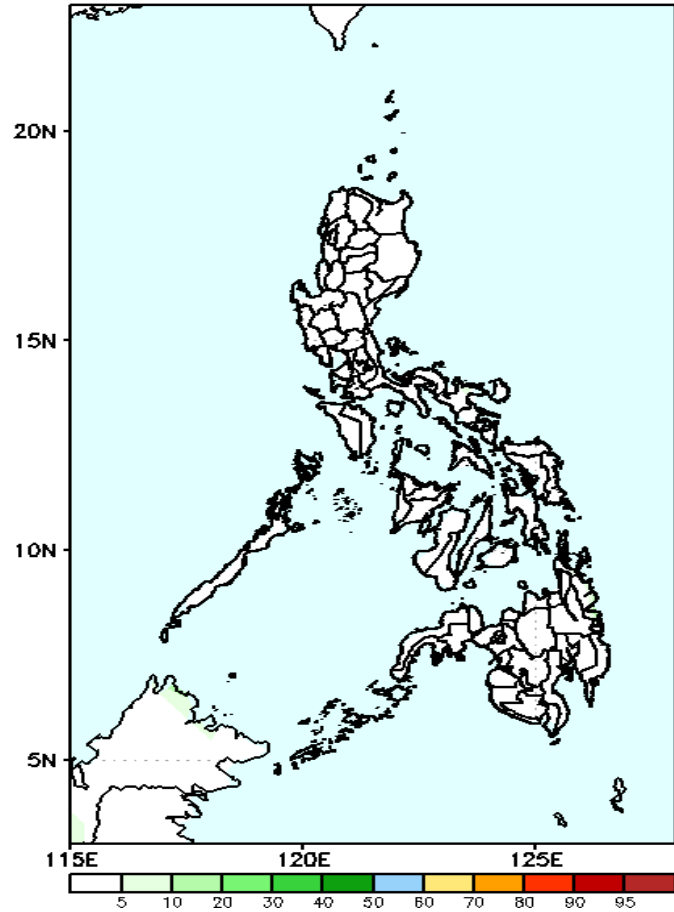


Less probability of rainfall to exceed 50mm in most parts of the country during the forecast period.

Exceedance Probability > 100/150/200 mm

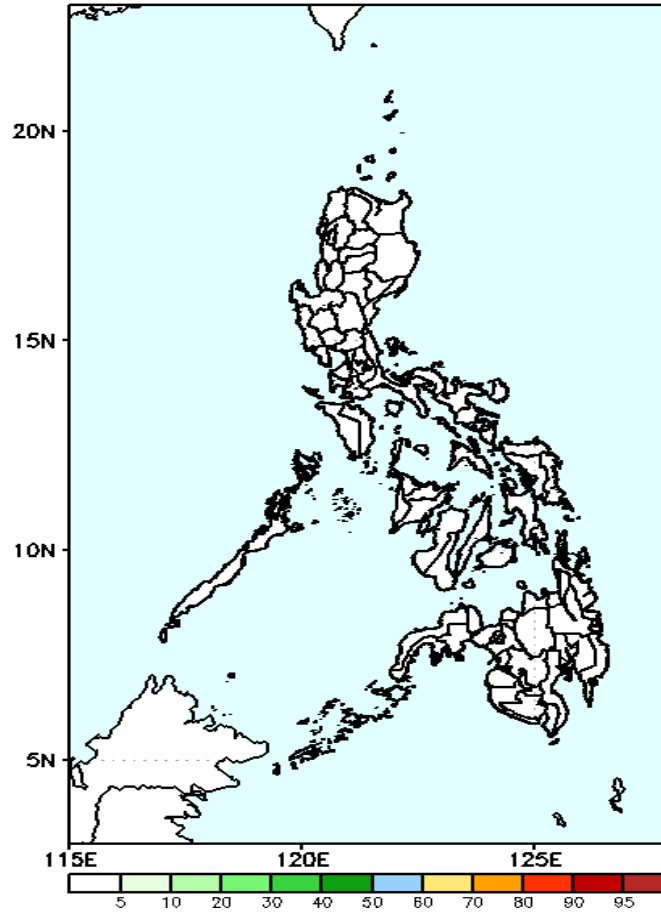
Week 1: February 1-7, 2021

GEFS Week-1 Exceedance Prob. > 100mm
Valid: 20210201 - 20210207



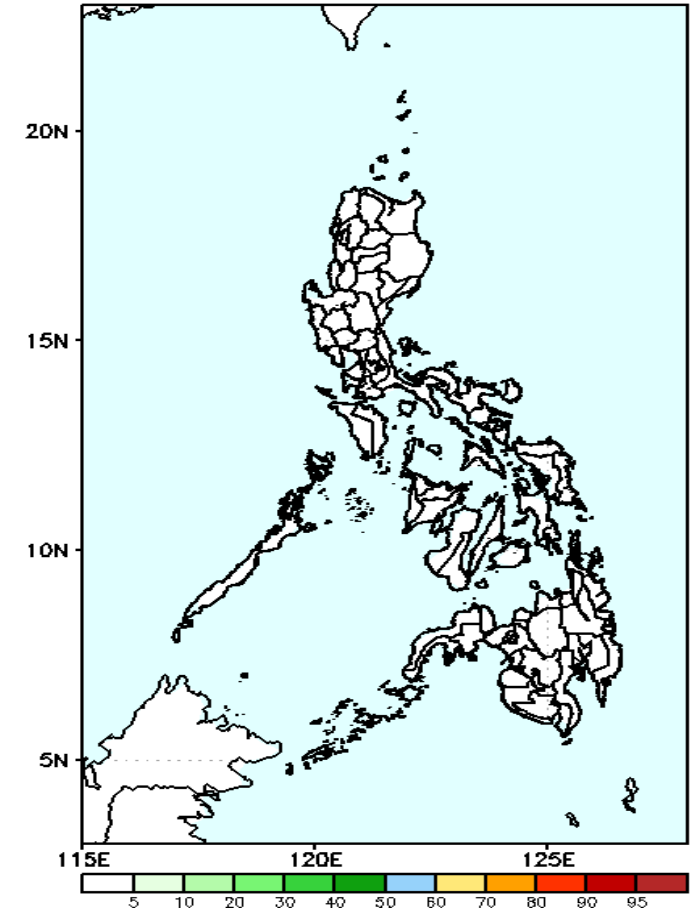
Less probability of rainfall to exceed 100mm in most parts of the country during the forecast period.

GEFS Week-1 Exceedance Prob. > 150mm
Valid: 20210201 - 20210207



Less probability of rainfall to exceed 150mm in most parts of the country during the forecast period.

GEFS Week-1 Exceedance Prob. > 200mm
Valid: 20210201 - 20210207



Less probability of rainfall to exceed 200mm in most parts of the country during the forecast period.



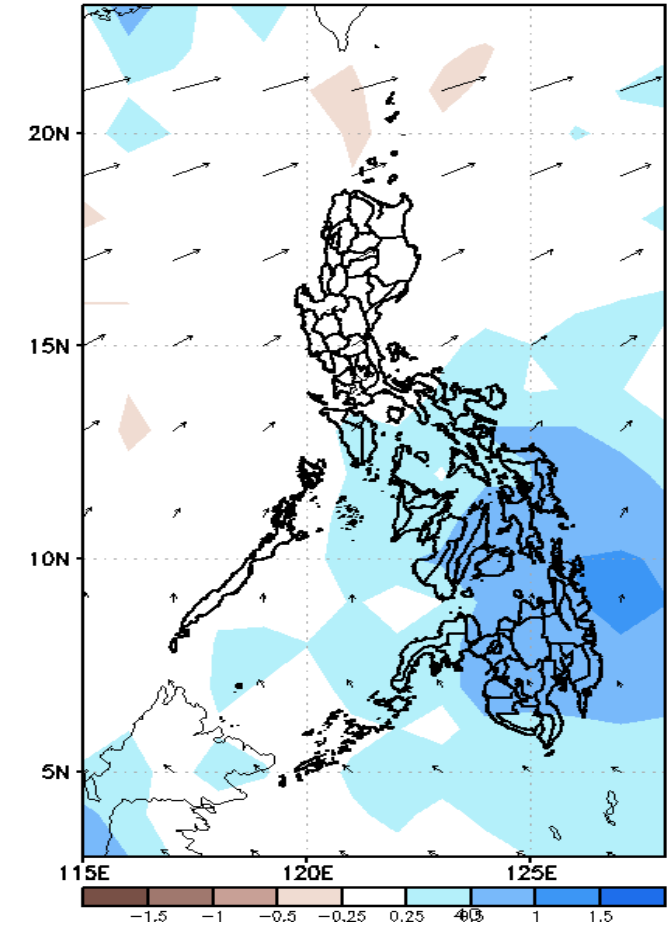
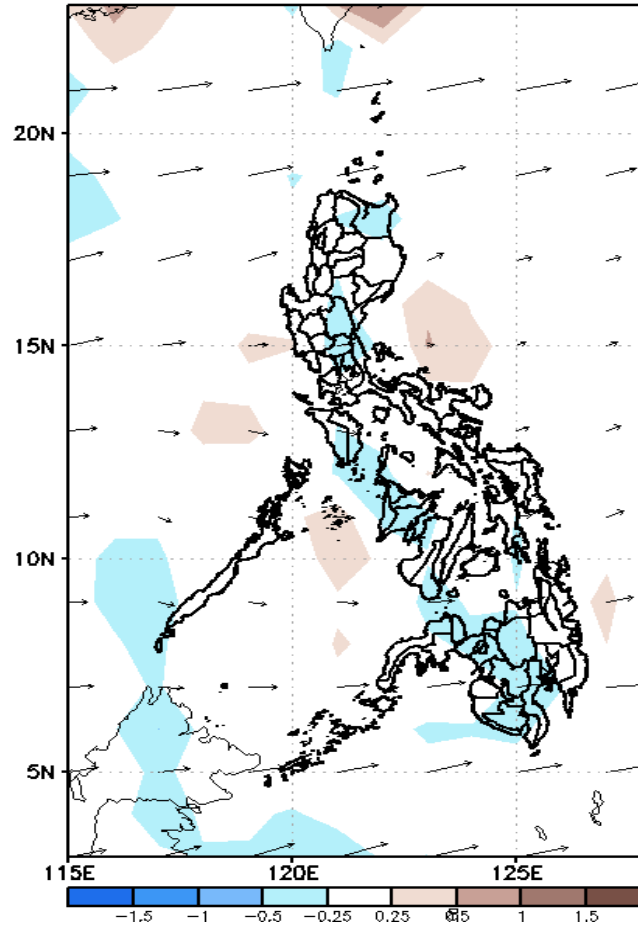
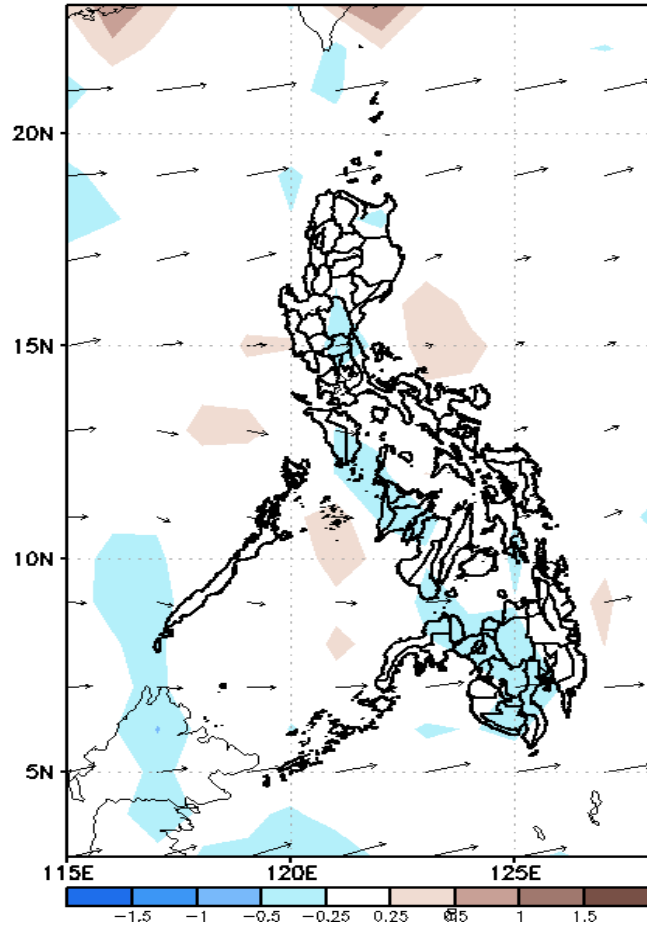
GEFS Week-2 Forecasts: Divergence & Wind Anomaly

Week 2: February 8-14, 2021

GEFS Week-2 850-hPa Divergence and Wind Anom
Valid: 20210208 - 20210214

GEFS Week-2 700-hPa Divergence and Wind Anom
Valid: 20210208 - 20210214

GEFS week-2 200-hPa Divergence and Wind Anom
Valid: 20210208 - 20210214

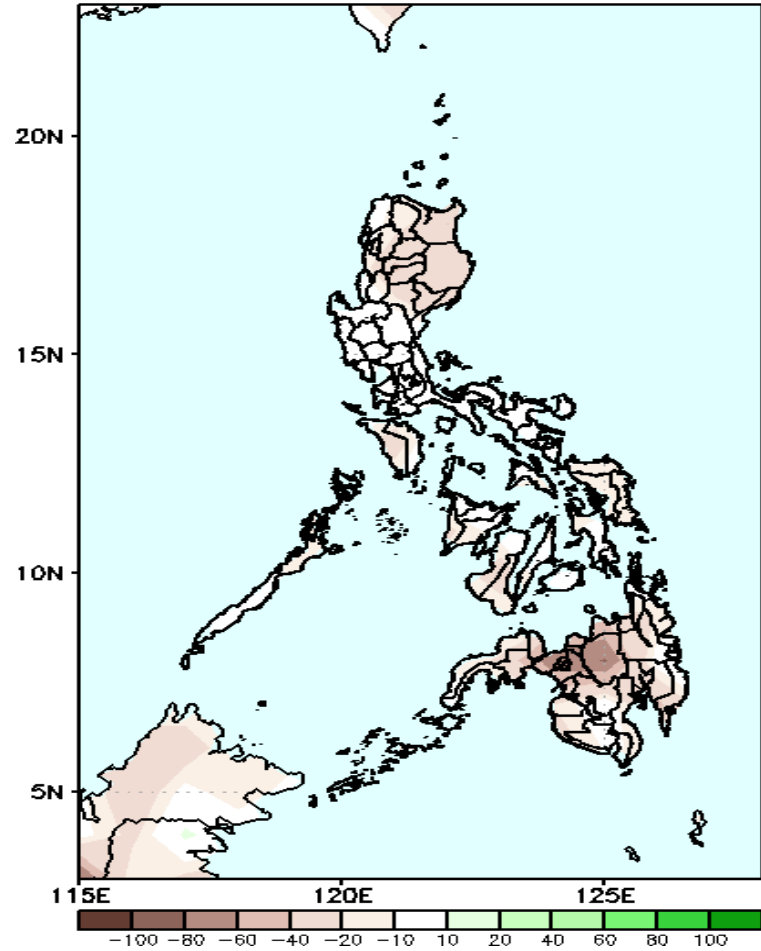


Upper and low level Divergence suggest likelihood of precipitation in most parts of the country. Northeast Monsoon affecting Northern and Extreme Northern Luzon while Easterlies affecting most parts of the country during the forecast period.

Precipitation Anomaly and Exceedance Probability > 25/50 mm

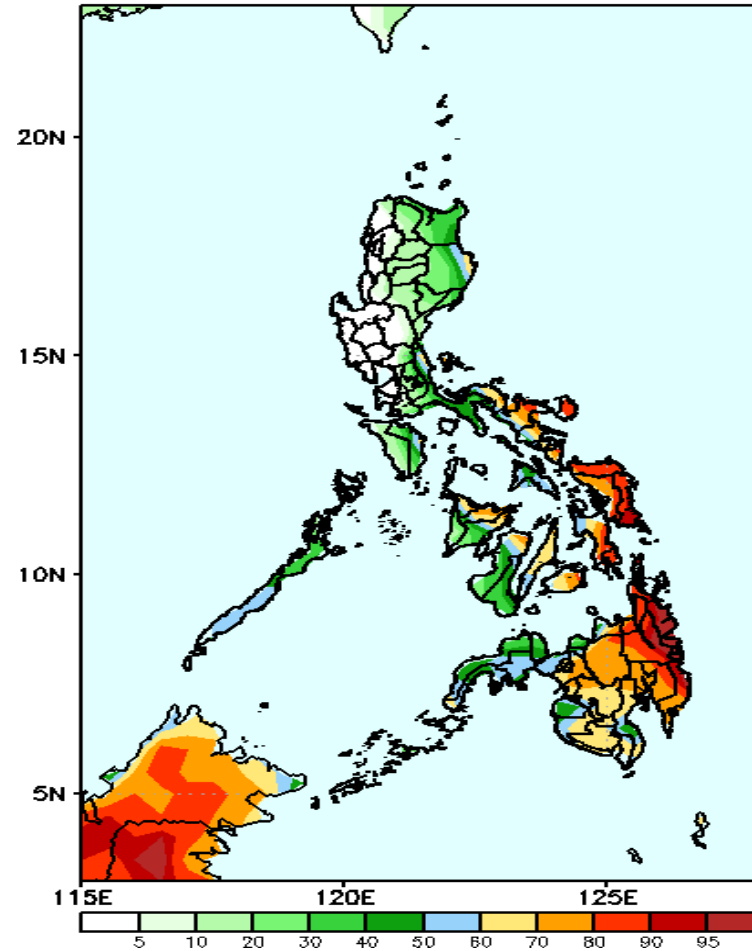
Week 2: February 8-14, 2021

GEFS Week-2 Precip Anomaly
Valid: 20210208 - 20210214



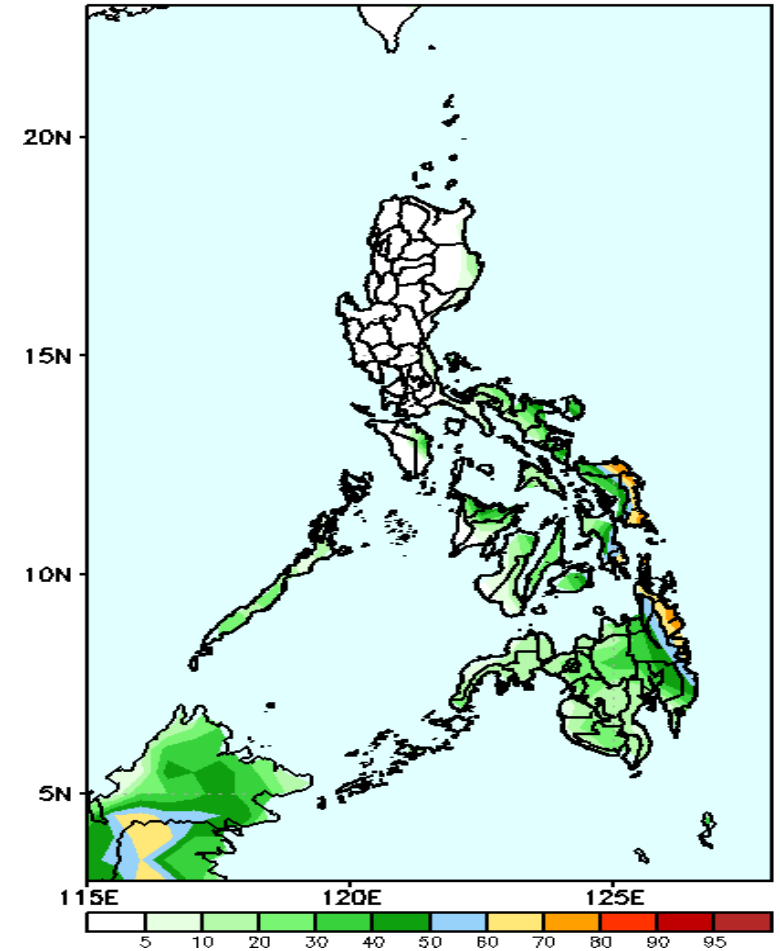
Rainfall deficit of 40-80mm is expected in most parts of the country especially in Bukidnon.

GEFS Week-2 Exceedance Prob. > 25mm
Valid: 20210208 - 20210214



High probability of rainfall to exceed 25mm in Cagayan, Isabela, Quezon, Bicol region, Palawan and most parts of Visayas and Mindanao during the forecast period.

GEFS Week-2 Exceedance Prob. > 50mm
Valid: 20210208 - 20210214

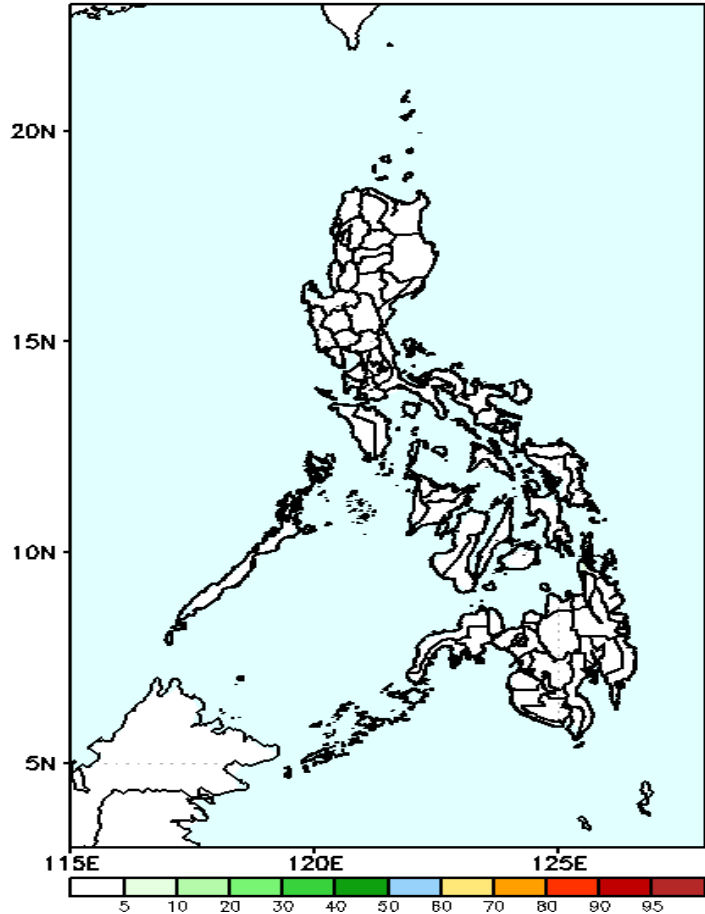


Less probability of rainfall to exceed 50mm in most parts of the country except Eastern Samar and Surigao provinces were 50mm of rainfall is most likely during the forecast period.

Exceedance Probability > 100/150/200 mm

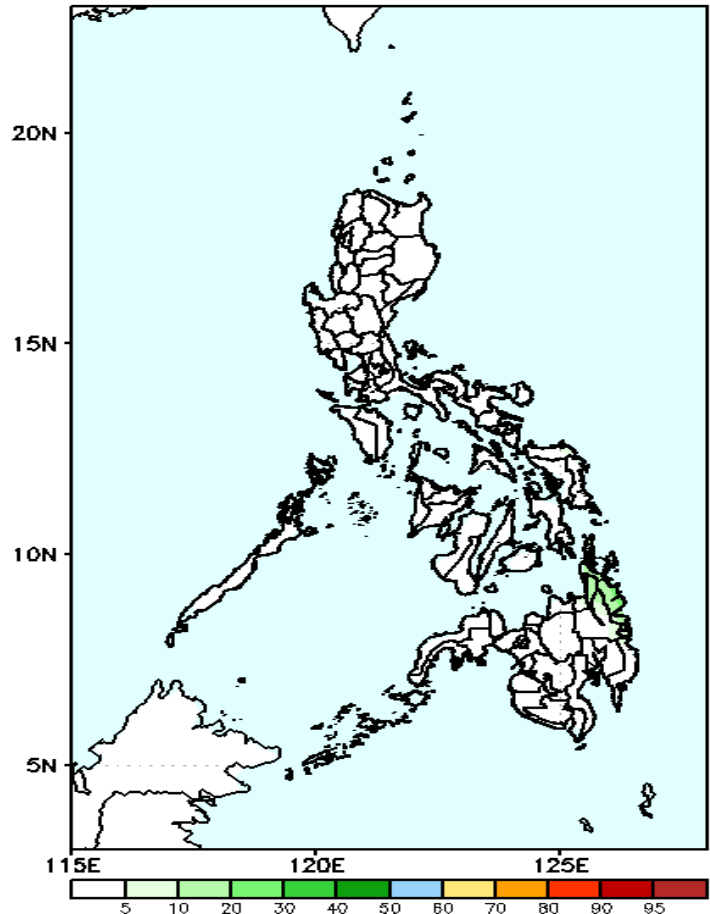
Week 2: February 8-14, 2021

GEFS Week-2 Exceedance Prob. > 200mm
Valid: 20210208 - 20210214



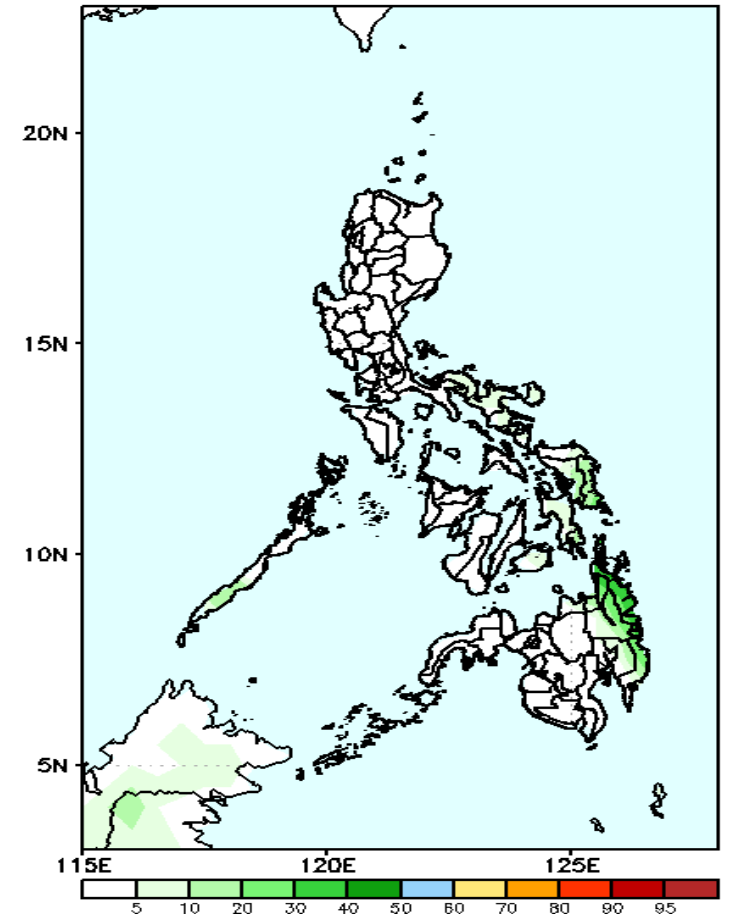
Less probability of rainfall to exceed 100mm in most parts of the country during the forecast period.

GEFS Week-2 Exceedance Prob. > 150mm
Valid: 20210208 - 20210214



Less probability of rainfall to exceed 150mm in most parts of the country during the forecast period.

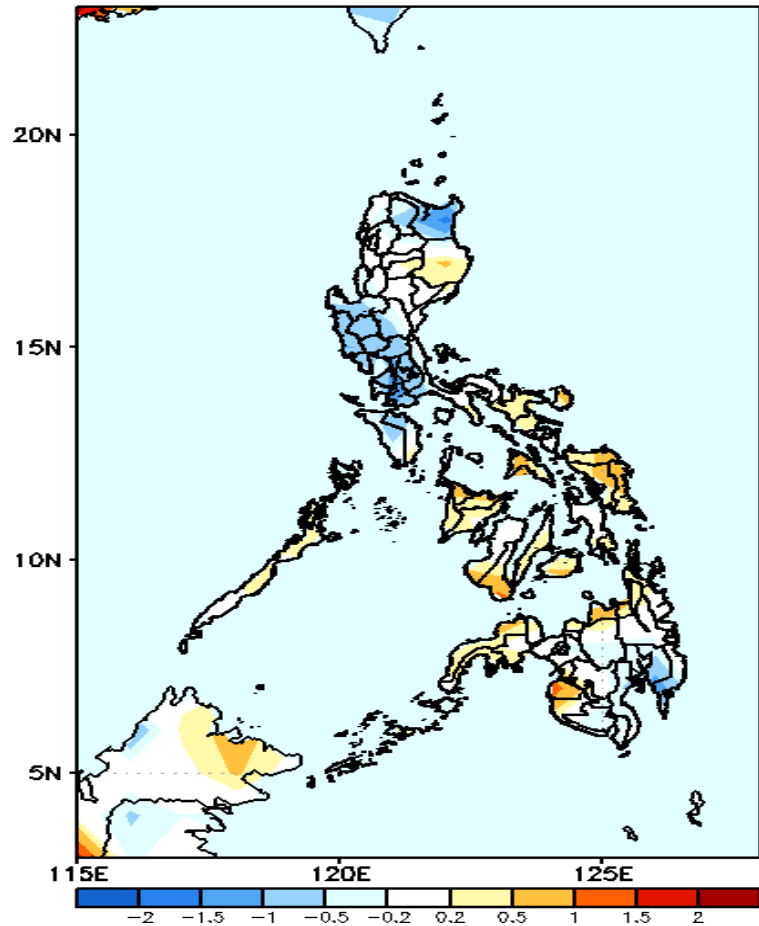
GEFS Week-2 Exceedance Prob. > 100mm
Valid: 20210208 - 20210214



Less probability of rainfall to exceed 200mm in most parts of the country during the forecast period.

GEFS Week-1 & 2 Forecasts: T2m Anomaly

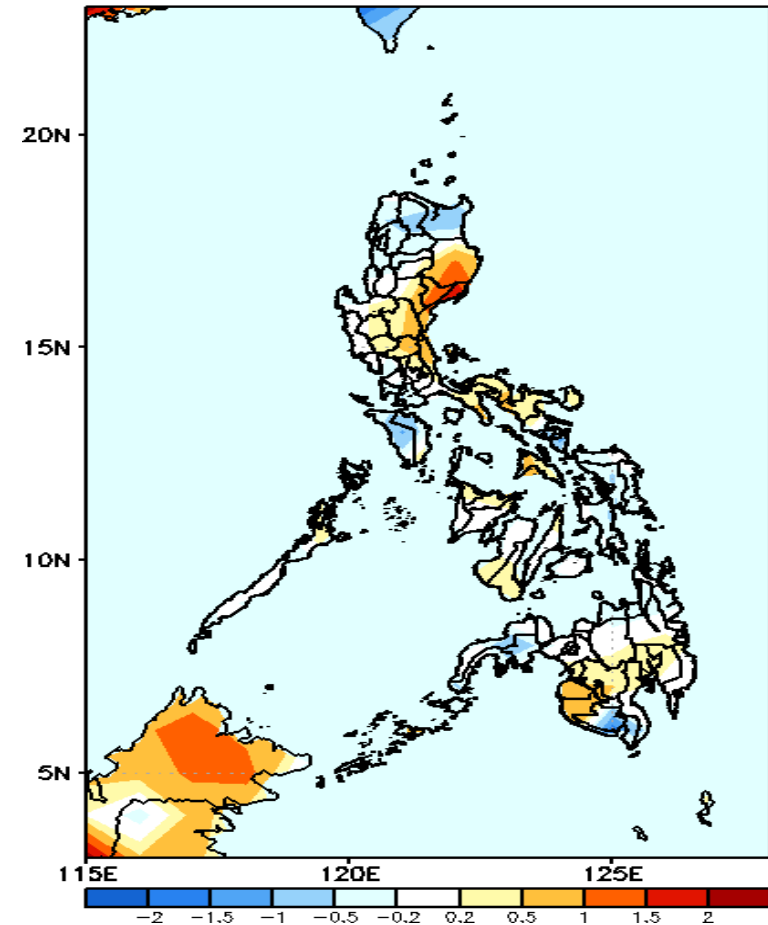
GEFS Week-1 T2m Anomaly
Valid: 20210201 - 20210207



2m Temperature Week 1: February 1-7, 2021

Cooler than average surface air temperature is expected in Cagayan, in southwestern parts of Luzon and in Sarangani & South Cotabato while average to slightly warmer than average surface air temperature for the rest of the country.

GEFS Week-2 T2m Anomaly
Valid: 20210208 - 20210214



2m Temperature Week 2: February 8-14, 2021

Warmer than average surface air temperature is expected in most parts of eastern Luzon (except Cagayan) and Maguindanao & Sultan Kudarat while average to slightly cooler than average surface air temperature for the rest of the country.